

FRONT VIEW

INSIDE VIEW

SIDE VIEW

BOTTOM VIEW

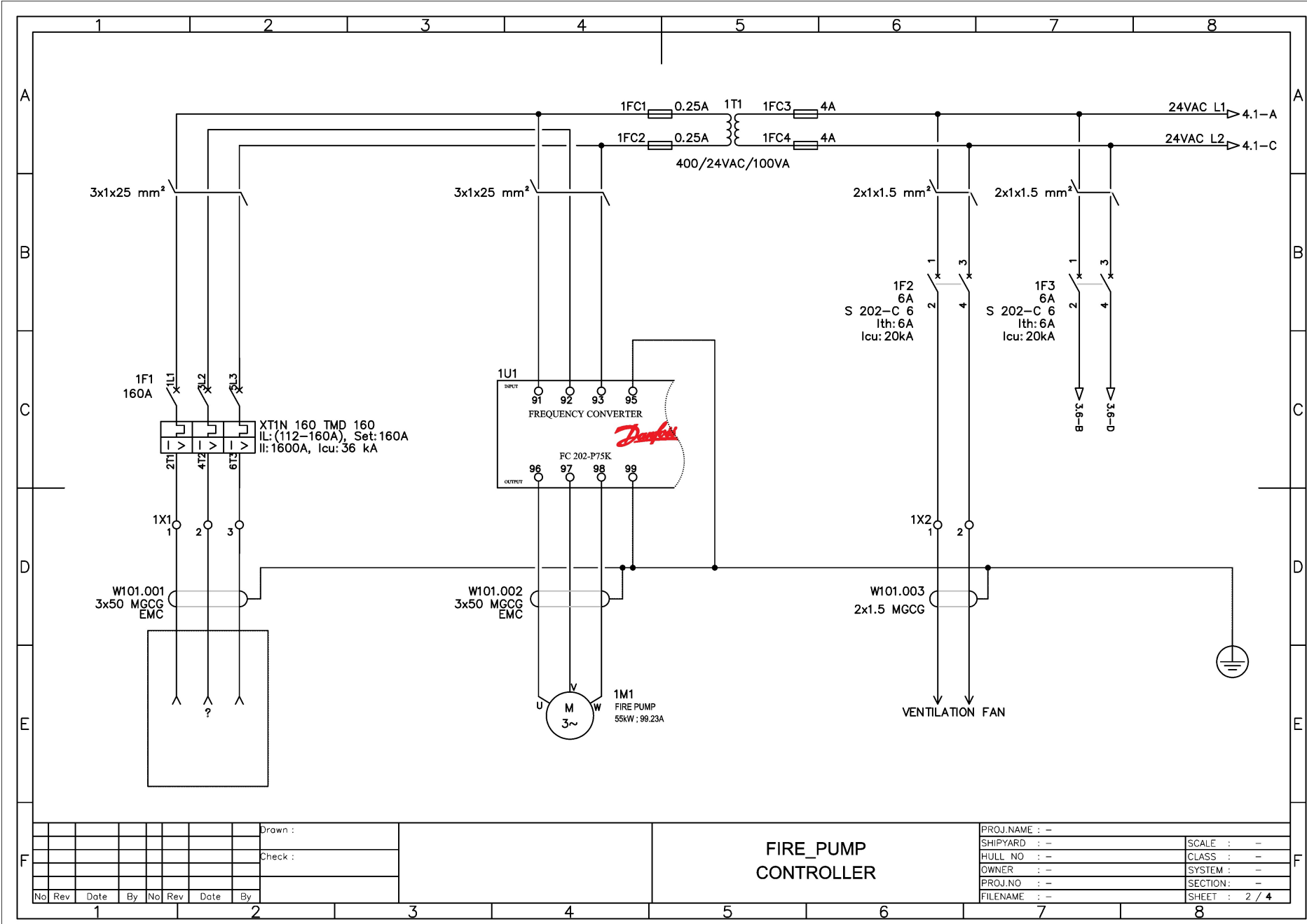
2xPG-36  
2xPG-13.5

FIRE\_PUMP  
CONTROLLER

No	Rev	Date	By	No	Rev	Date	By

Drawn :  
Check :

PROJ.NAME : -	SCALE : -
SHIPYARD : -	CLASS : -
HULL NO : -	SYSTEM : -
OWNER : -	SECTION : -
PROJ.NO : -	SHEET : 1 / 4
FILENAME : -	



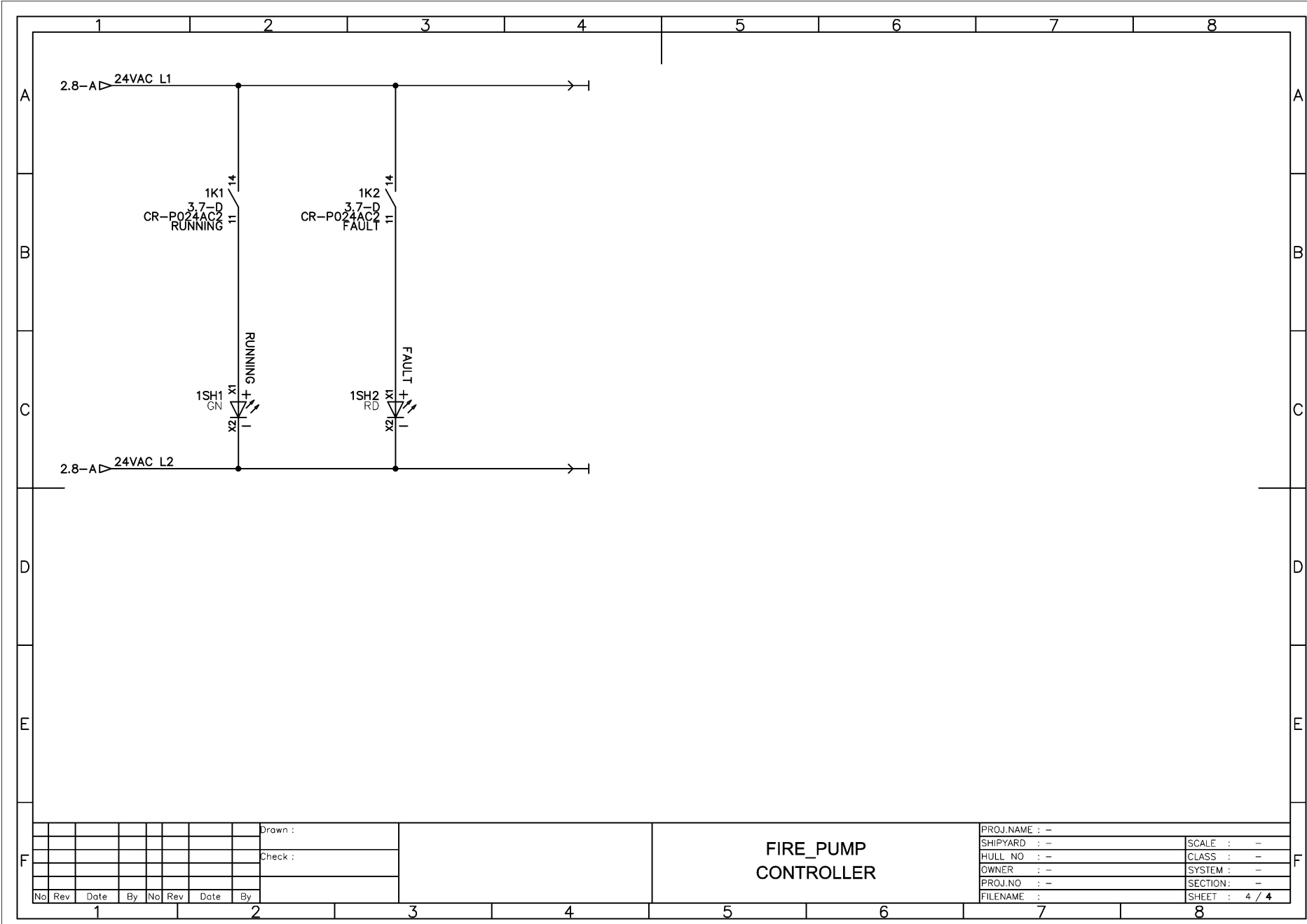
No	Rev	Date	By	No	Rev	Date	By

Drawn :  
 Check :

### FIRE\_PUMP CONTROLLER

PROJ.NAME : -	SCALE : -
SHIPYARD : -	CLASS : -
HULL NO : -	SYSTEM : -
OWNER : -	SECTION : -
PROJ.NO : -	SHEET : 2 / 4
FILENAME : -	





No	Rev	Date	By	No	Rev	Date	By

Drawn :

Check :

### FIRE\_PUMP CONTROLLER

PROJ.NAME : -	SCALE : -
SHIPYARD : -	CLASS : -
HULL NO : -	SYSTEM : -
OWNER : -	SECTION : -
PROJ.NO : -	SHEET : 4 / 4
FILENAME : -	

		BILL OF MATERIAL		FIRE PUMP	
		Project No : -			
		Drawn <sup>n</sup> No : -			
TAGS	QTY	CATALOG	MFG	DESC	ORDERING CODE
1U1	1	FC 202-P75K	DANFOSS	Frequency converter	131F6658
1T1	1	400/24VAC 100VA	ORION	1-PH CONTROL CIRCUIT TRANSFORMER	400/24VAC 100VA
1K1,1K2	2	CR-P024AC2	ABB	CR-P024AC2 Pluggable interface relay 2c/o	1SVR405601R0000
	2	CR-PLS	ABB	CR-PLS Logical socket for 1c/o or 2c/o CR-P relays	1SVR405650R0000
	2	CR-P/M92	ABB	CR-P/M 92 Pluggable module	1SVR405654R0100
1F1	1	XT1N 160, TMD160	ABB	C.Breaker TMAX XT1N 160 Fixed Three-Pole	1SDA067418R1
	1	RHE_EM XT1-XT3	ABB	RHE_EM XT1-XT3 F/P Emer. Returned	1SDA066481R1
1F2,1F3	2	S202-C6	ABB	S202-C6 Miniature Circuit Breaker - 2P - C - 6 A	2CDS252001R0064
1S1	1	M22-PVT	EATON	Emergency Stop/ Emergency switching off pushbutton	M22-PVT
	1	M22-XGPV	EATON	Guard-Ring	M22-XGPV
	1	M22-K01	EATON	Contact Block NC	M22-K01
	1	M22-A	EATON	Contact Block Mounting Adapter	M22-A
1S2	1	M22-WRK	EATON	Off/On Button, Changeover Switch, Maintained, 2 positions	M22-WRK
	1	M22-K10	EATON	Contact Block NO	M22-K10
	1	M22S-ST-X	EATON	Plate Holder	M22S-ST-X
	1	M22-A	EATON	Contact Block Mounting Adapter	M22-A
1S3	1	M22-WRK3	EATON	Changeover Switch, Maintained, 3 positions	M22-WRK3
	1	M22-K10	EATON	Contact Block NO	M22-K10
	1	M22S-ST-X	EATON	Plate Holder	M22S-ST-X
	1	M22-A	EATON	Contact Block Mounting Adapter	M22-A
1SH1	1	M22-L-G	EATON	Indicating Lights,Flush,Green Light, White Lens	M22-L-G
	1	M22-LED-G	EATON	24V Led, Green	M22-LED-G
	1	M22S-ST-X	EATON	Plate Holder	M22S-ST-X
	1	M22-A	EATON	Contact Block Mounting Adapter	M22-A
1SH2	1	M22-L-R	EATON	Indicating Lights,Flush,Red Light, White Lens	M22-L-R
	1	M22-LED-R	EATON	24V Led, Red	M22-LED-R
	1	M22S-ST-X	EATON	Plate Holder	M22S-ST-X
	1	M22-A	EATON	Contact Block Mounting Adapter	M22-A
1FC1,1FC2,1FC3,1FC4	4	ZS4-SF1	ABB	Screw Clamp Terminal Block - for Fuses 5x20 and 5x25 mm - Grey	1SNK508410R0000
1FC1,1FC2	2	0,25A, 5x20mm	-	1A Glass Fuse 5x20mm	0,25A
1FC3,1FC4	2	4A, 5x20mm	-	2A Glass Fuse 5x20mm	4A
1X1	3	ZS50	ABB	Screw Clamp Terminal Block	ZS50
1X2,1X3	4	ZS4	ABB	Screw Clamp Terminal Block	1SNK505010R0000
	1	800x1000x400mm	-	Switchboard	800x1000x400mm
	2	PG 36	REKSAN	Brass Cable Entries	PG 36
	2	PG 13,5	REKSAN	Brass Cable Entries	PG 13,5